

Arteffactau siop Fictoraidd i'r arddangosfa yn y 'Cornel Cartref'



Cynhyrchwyd y pecyn gan Archifau Sainsbury



Mae yna chwe peth i wneud

- Tun of ffrwythau - Dewiswch label - Gellyg neu Binafal.
Lliwiwch y label i fewn.
Torrwch ef allan a'i ludio ar dun glan.
- Teil 1 - Gorffennwch y teil drwy ddilyn y dotiau.
Lliwiwch y teil. Edrychwch ar gern y siop os ydych am weld pa liwiau oedd Sainsbury's yn defnyddio, ond gallwch ddewis eich lliwiau eich hunan.
- Teil 2 - Gall y daflen gyda dwy deilsen cael ei lliwio i fewn hefyd. Fe aiff deg o'r teil yma o amgylch yr hysbyseb sydd hefyd yn y pecyn.
- Pecyn te - Lliwiwch i fewn y Pecyn te.
Torrwch ef allan, plygwch ef ac yna ei ludio at ei gilydd i wneud pecyn te hen ffasiwn.
I safio amser fe allwch lun-gopio'r cynllun ar bapur lliw.
- Hysbyseb Helaethwch yr hysbyseb ar lungopiwr i'r maint A3 ac yna defnyddiwch y teil y disgrifiwyd uchod (Teil 2) i fynd o'i hamgylch.
- Jam - Dewiswch label, cyrens duon neu fricyll.
Ysgrifennwch eich enw ar flaen y label.
Lliwiwch i fewn y label a'r clawr.
Torrwch nhw allan a gludiwch nhw ar jar jam glan a'r clawr..

Tun 1

THE

FAMOUS

SAINSBURY'S

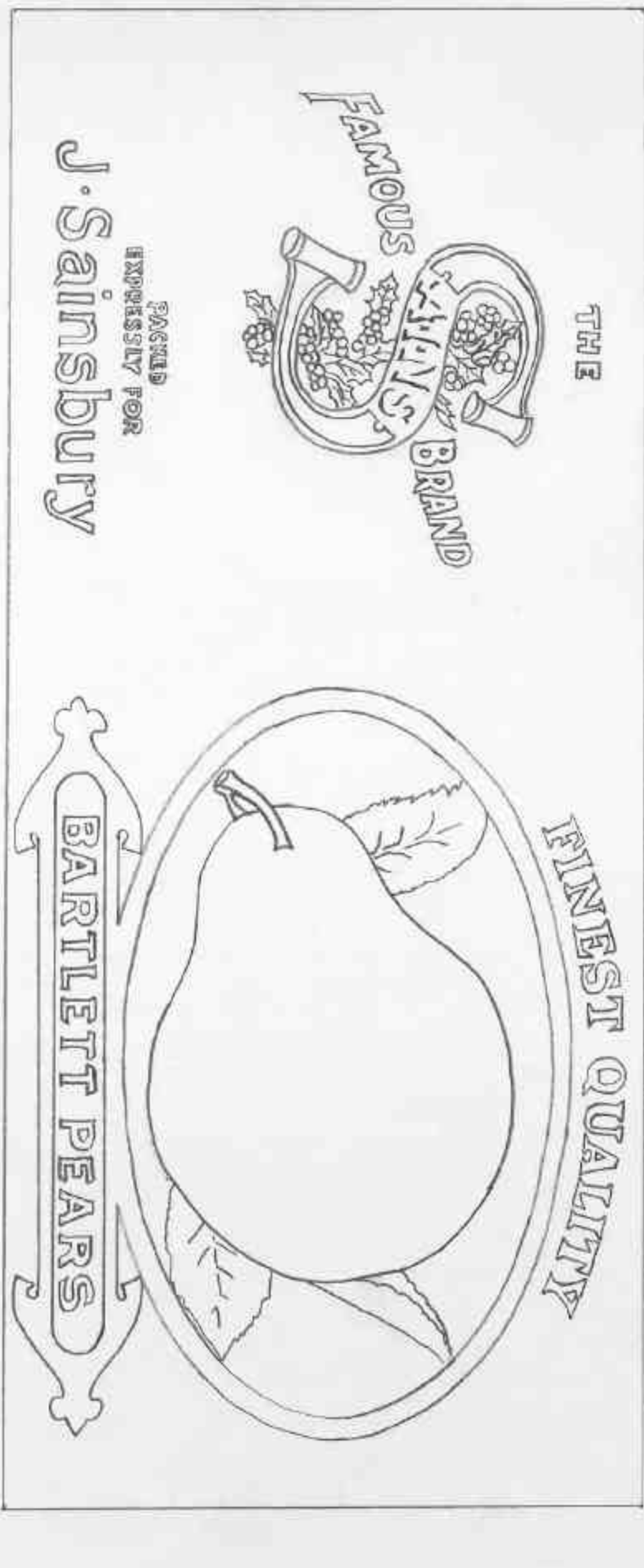
BRAND

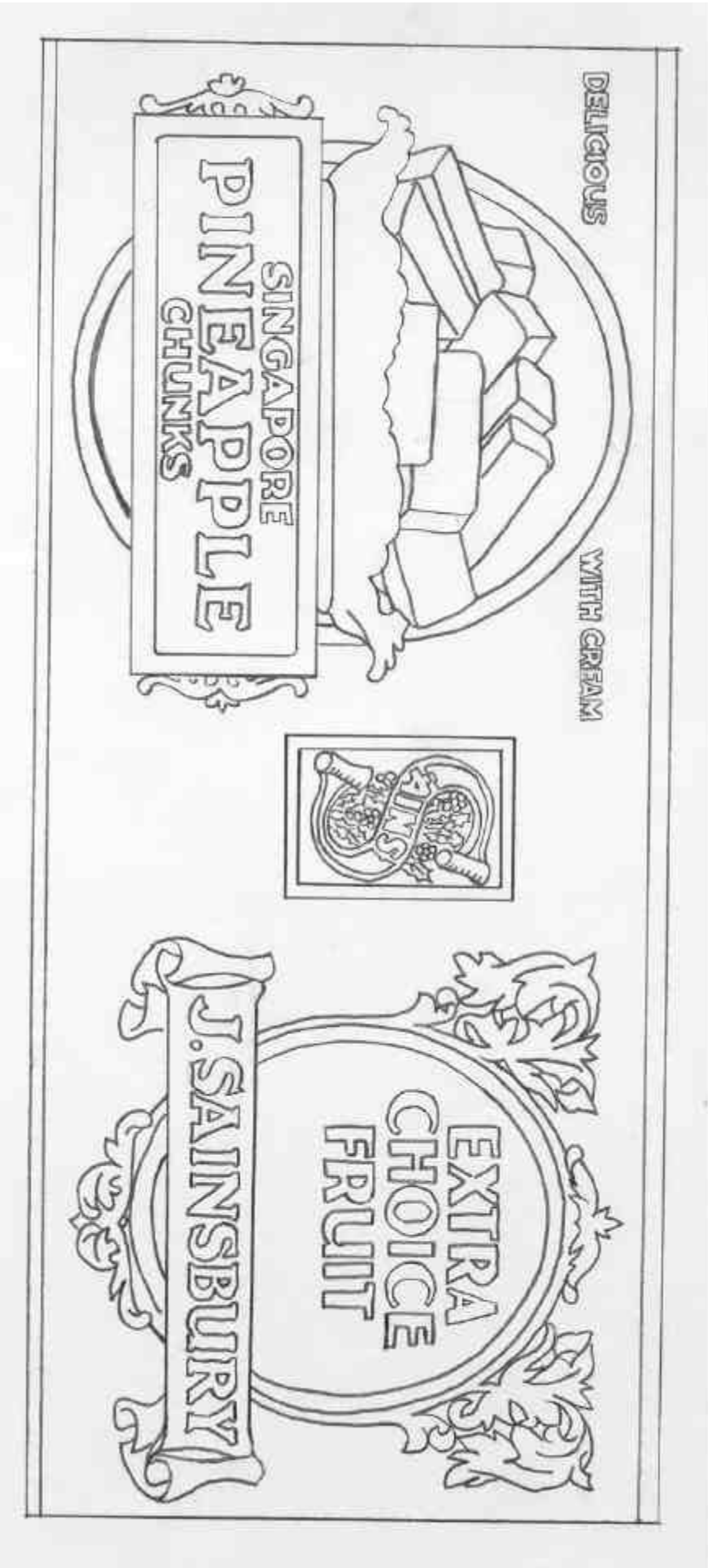
PACKED EXPRESSLY FOR

J. Sainsbury

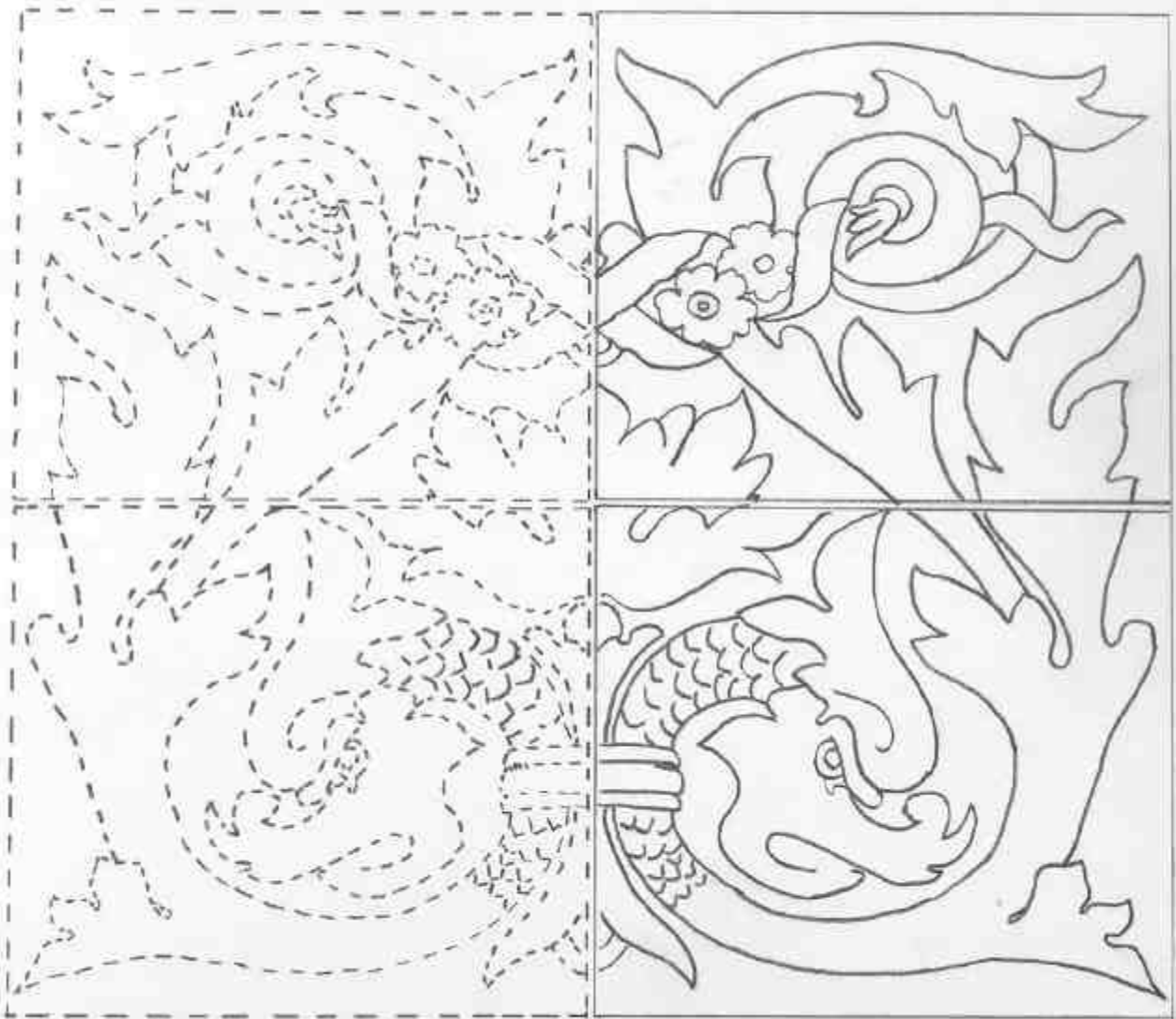
FINEST QUALITY

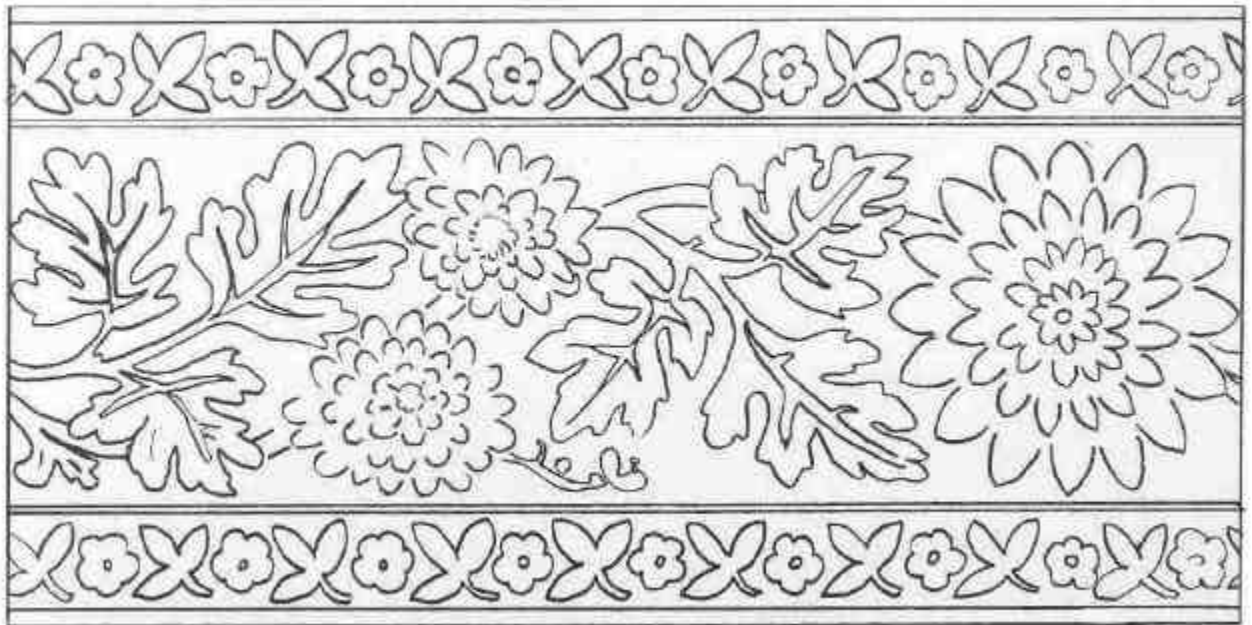
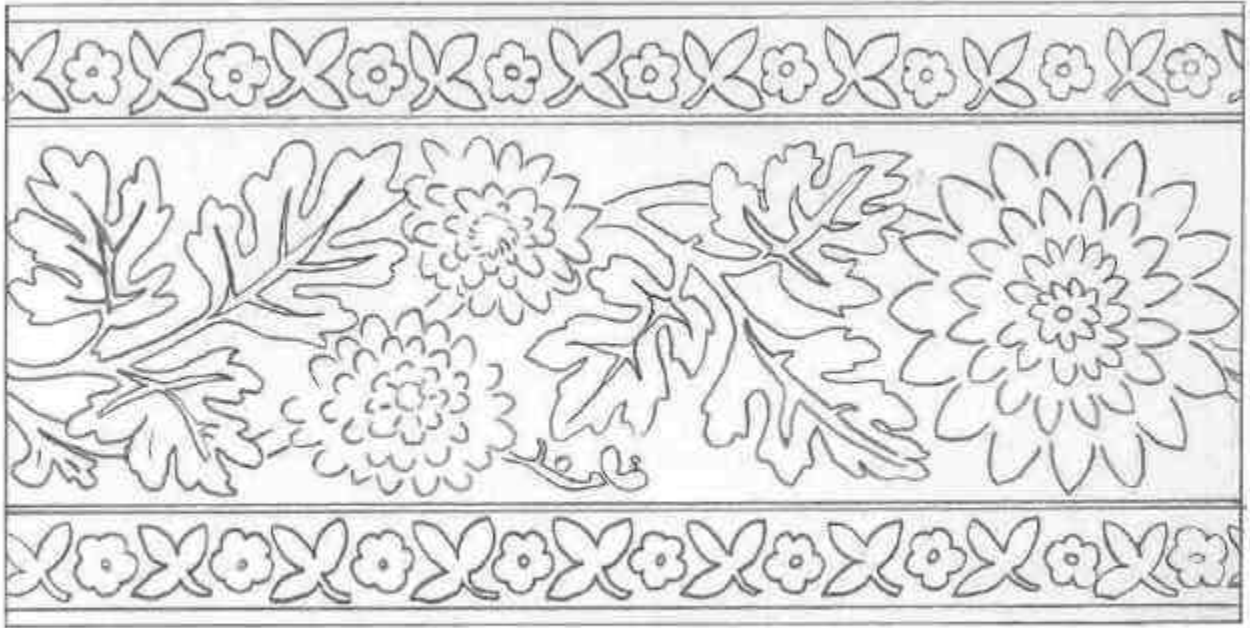
BARTLETT PEARS





Teil 1





Teil 2; hwn yw'r un sydd yn mynd o amgylch yr hysbyseb.



J.S. Sainsbury's
Pure leaf

QUARTER POUND
FULL WEIGHT.

J.S. Sainsbury's
Pure leaf

*The early
morning cup.*



**Always
buy your
TEA from
Sainsbury's**

The qualities most
in demand are:

No. 22 A blend of the finest growths from the noted gardens of Northern India with those from Ceylon. Rather fuller in flavour, this Tea is a great favourite with those who do not require the extreme delicacy of No. 46. Very economical for family use because of the small quantity needed to "make Tea" either for the Table or for the early Morning Cup.

No. 46 The most delicious Tea obtainable and the most satisfactory to buy. In this the young leaf from the Assam and Darjeeling districts is blended with the choicest high-grown tea from Ceylon. A delight to those who can appreciate the delicacy of the very Finest Tea. Paying the small difference in price is true economy because this refined quality goes much further than the cheaper blends.

*Government
Tea*

2'4 per lb.

A special blend of Indian and Ceylon sold by Sainsbury's at the popular price of 2/4. Rich and full, it is most excellent value — the quality being guaranteed by Sainsbury's.

Sainsbury's

